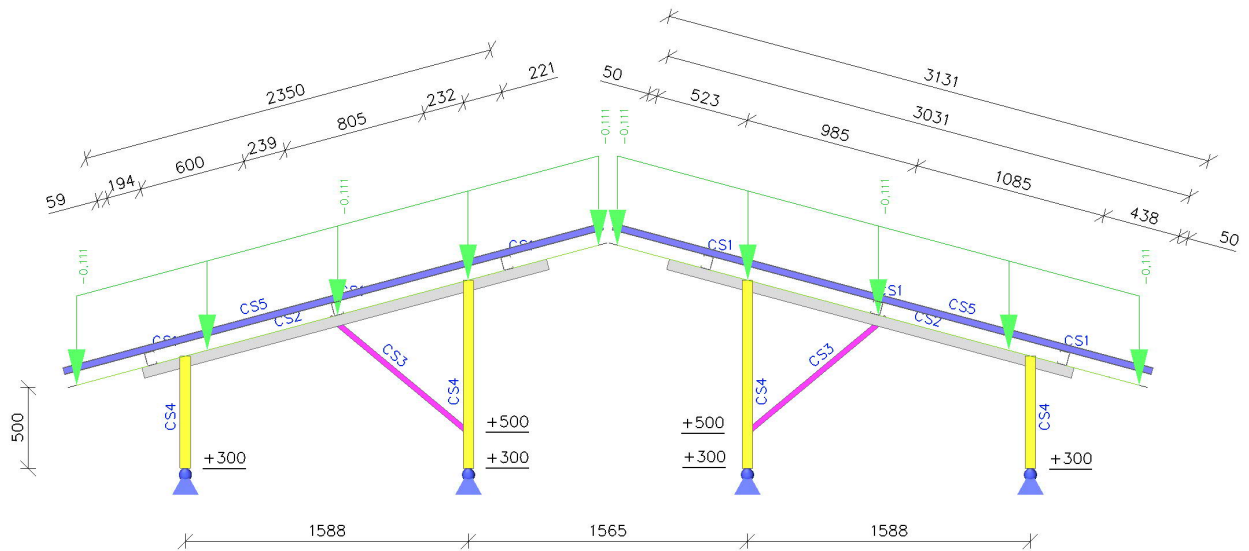


view (alpha = 15°)



Bill of material

Name	Mass [kg]	Surface [mm ²]	Volume [m ³]
Total results :	328,25	34288487,032	4,1815e-02

Explanations of symbols	
Surface	Note: only one surface of each 2D member is taken into account for calculation of the surface area.

CSS	Material	Unit mass [kg/m]	Length [mm]	Mass [kg]	Surface [mm ²]	Unit volume mass [kg/m ³]	Volume [m ³]
CS1 - Kaltgeformtes C-Profil (75,00; 55,00; 2,00; 2,50; 11,00)	S350GD+Z	2,96	41400,002	122,44	16160667,419	7850,00	1,5598e-02
CS2 - RRK60/40/3	S 355	4,25	14100,000	59,88	2678999,901	7850,00	7,6281e-03
CS3 - QRO30X3K	S 235	2,36	6061,380	14,31	664933,324	7850,00	1,8234e-03
CS4 - RRK60/60/3	S 355	5,19	10085,161	52,33	2319586,992	7850,00	6,6663e-03
CS5 - Cold formed C section (40,00; 36,00; 1,50; 1,50; 7,00)	S350GD+Z	1,32	50096,004	66,35	11805189,133	7850,00	8,4525e-03
CS6 - FCh5x35	S 235	0,62	20981,279	12,93	659112,871	7850,00	1,6475e-03

notice cross sections and material quality !